



# GMT MONTHLY MEMBERSHIP PROGRESS REPORT

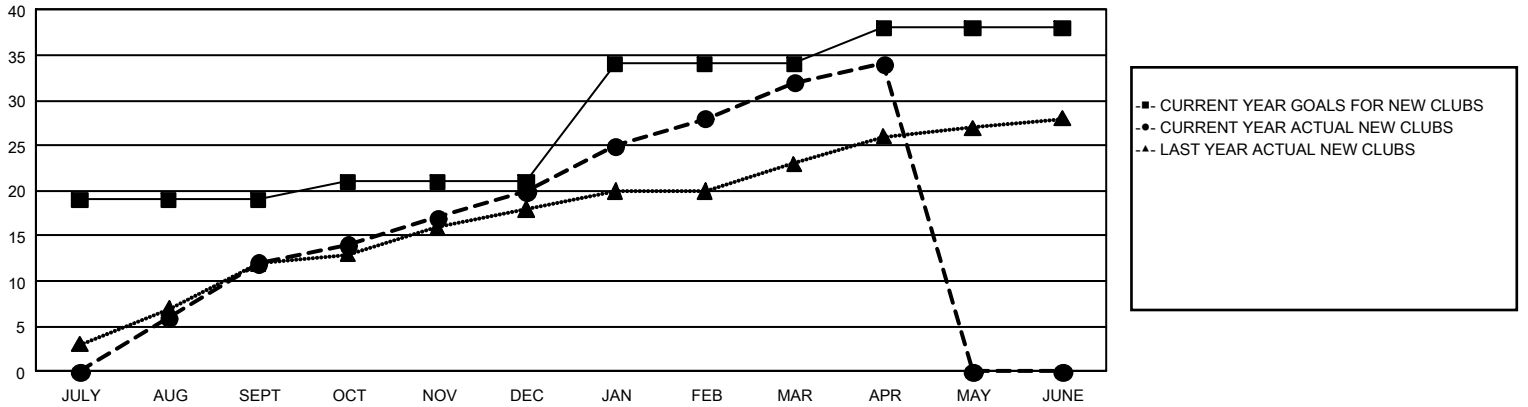
## GAT Constitutional Area 5 - Korea

Results as of: 4/30/2024

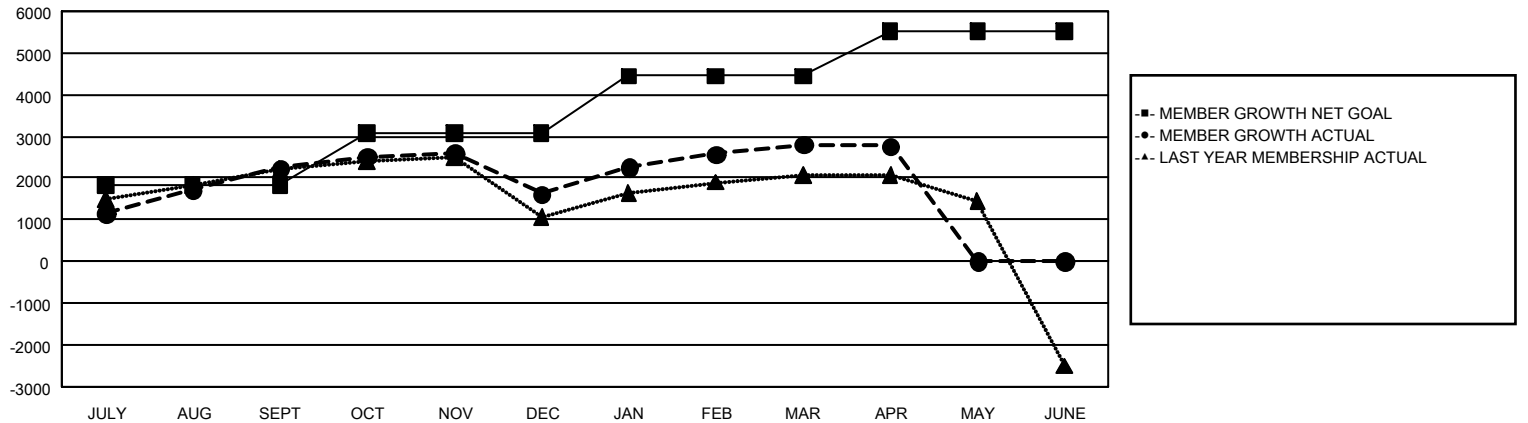
REPORT DOES NOT INCLUDE CLUBS IN UNDISTRICTED AREAS.

Clubs				Members			
RESULTS FOR 2023-2024				RESULTS FOR 2023-2024			
QUARTER	NEW CLUB GOAL	NEW CLUBS	DROPPED CLUBS	QUARTER	MEMBER GROWTH NET GOAL	MEMBER GROWTH ACTUAL	DROPPED MEMBERS ACTUAL (including transfers)
JULY/AUG/SEPT	19	12	9	JULY/AUG/SEPT	1,828	4,741	2,248
OCT/NOV/DEC	2	8	14	OCT/NOV/DEC	1,256	2,235	2,739
JAN/FEB/MAR	13	12	2	JAN/FEB/MAR	1,363	2,570	1,251
APR/MAY/JUNE	4	2	5	APR/MAY/JUNE	1,085	409	419

**GOALS AND ACTUAL NEW CLUBS CUMULATIVE**



**GOALS AND ACTUAL MEMBERS CUMULATIVE**



DROPPED CLUBS: 28	1,603 CLUBS OF 2,045 ADDED 1 OR MORE NEW MEMBERS	<b>GENDER DISTRIBUTION</b>
<b>DROPPED MEMBERS</b>		MALE                    53,719 (73.47%)
DECEASED                    209		FEMALE                    19,391 (26.52%)
CLUB CANCELLED            221	<a href="#">CLICK HERE FOR CUMULATIVE MEMBERSHIP DATA</a>	TOTAL FAMILY UNIT MEMBERS                    4,026
OTHER                            6,227		FAMILY MEMBERS PAYING HALF DUES                    2,318
<b>TOTAL                            6,657</b>		